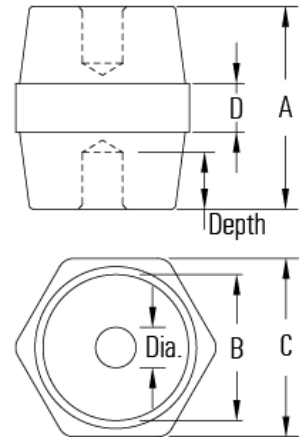
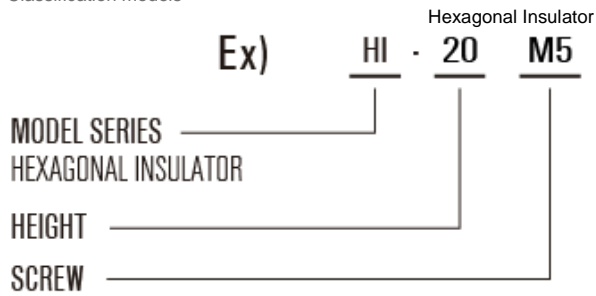


Hexagonal Insulator

Classification models



Feature

- Variety of Color
- Variety of Screw M5, M6, M8, M10, M12
- Made of bulk molding compound, unsaturated polymer with fiber glass(BMC, DMC),
- Good electrical resistance, heat resistance, fire resistance, low shrinkage and water resistance properties

Technical Data

| Type | Dimension (mm) | | | | | Screw (mm) | | Tensile strength (LBS) | Voltage withstand (KV) | Torgue strength (FT LBS) |
|--------|----------------|-------|----|----|--------|--------------|--------|------------------------|------------------------|--------------------------|
| | A | B | C | D | Fig. | Dia. | Depth | | | |
| HI-16 | 16 | Φ12 | 15 | 4 | Fig. 1 | M4, M5 | 4 | 400 | 4 | 3 |
| HI-20 | 20 | Φ16 | 19 | 5 | Fig. 1 | M4, M5, M6 | 6 | 400 | 7 | 3, 6, 10 |
| HI-25 | 25 | Φ15 | 19 | 5 | Fig. 1 | M5, M6 | 6 | 400 | 8.5 | 6, 8 |
| HI-25A | 25 | Φ18 | 22 | 6 | Fig. 1 | M4, M5, M6 | 7 | 500 | 8.5 | 3, 6, 10 |
| HI-25B | 25 | Φ21 | 25 | 7 | Fig. 1 | M8 | 9 | 550 | 8.5 | 10 |
| HI-30 | 30 | Φ25 | 30 | 7 | Fig. 1 | M6, M8, M10 | 9 | 600 | 11 | 10, 20 |
| HI-30A | 30 | Φ33.5 | 40 | 8 | Fig. 1 | M8, M10 | 9 | 700 | 11 | 30, 40 |
| HI-30B | 30 | Φ26 | 30 | 7 | Fig. 1 | M6 | 9 | 500 | 6 | 6 |
| HI-35 | 35 | Φ28.5 | 32 | 10 | Fig. 1 | M6, M8, M10 | 9, 10 | 650 | 12.5 | 10, 25, 40 |
| HI-35A | 35 | Φ33 | 40 | 10 | Fig. 1 | M8, M10 | 10 | 700 | 12.5 | 25, 50 |
| HI-35B | 35 | Φ35 | 41 | 10 | Fig. 1 | M6, M8, M10 | 9, 10 | 700 | 12.5 | 10, 25, 50 |
| HI-38 | 38 | Φ27 | 33 | 10 | Fig. 1 | M6 | 10 | 650 | 8 | 8 |
| HI-40 | 40 | Φ34 | 41 | 12 | Fig. 1 | M8, M10, M12 | 10 | 800 | 14 | 25, 50, 85 |
| HI-40A | 40 | Φ40 | 46 | 12 | Fig. 1 | M8, M10, M12 | 10, 12 | 1000 | 14 | 25, 50, 85 |
| HI-45 | 45 | Φ39.5 | 46 | 12 | Fig. 1 | M8, M10, M12 | 15 | 1000 | 15.5 | 25, 50, 85 |
| HI-45A | 45 | Φ32 | 40 | 10 | Fig. 1 | M8 | 12 | 800 | 10 | 10 |
| HI-50 | 50 | Φ29 | 36 | 12 | Fig. 1 | M6, M8, M10 | 15 | 900 | 15.5 | 10, 25, 50 |
| HI-50A | 50 | Φ37 | 46 | 10 | Fig. 1 | M10 | 15 | 1100 | 15.5 | 50 |
| HI-50B | 50 | Φ45 | 50 | 15 | Fig. 1 | M8, M10, M12 | 15 | 1500 | 15.5 | 25, 50, 85 |
| HI-52 | 52 | Φ42 | 52 | 12 | Fig. 1 | M8, M10 | 12, 15 | 1200 | 15 | 12, 35 |
| HI-60 | 60 | Φ49.5 | 60 | 15 | Fig. 1 | M8, M10, M12 | 15, 20 | 2000 | 21 | 25, 50, 85 |

| | | | | | | | | | | |
|-------|----|-------|----|----|--------|---------------|-----------|------|----|-------------|
| HI-62 | 62 | Φ44 | 55 | 12 | Fig. 1 | M10 | 18 | 1500 | 20 | 40 |
| HI-65 | 65 | Φ32 | 41 | 12 | Fig. 1 | M8, M10, M12 | 15, 20 | 1000 | 22 | 25, 50, 85 |
| HI-70 | 70 | Φ52 | 60 | 14 | Fig. 1 | M10, M12, M16 | 20, 25 | 2000 | 25 | 50, 85, 200 |
| HI-75 | 75 | Φ38.5 | 50 | 16 | Fig. 1 | M8, M10, M12 | 15, 20 | 1500 | 28 | 25, 50, 85 |

www.komutacija.com

komutacija@gmail.com

petras@zaliasis-namas.lt